



LIVE IN HARMONY WITH NATURE

1BHK &  
2BHK FLATS

**AR** **Associated Recons LLP**

Connecting Generations...Building Values !

MAHA RERA NO. :  
P52100080254



## ABOUT US

ESTABLISHED IN 2014, ASSOCIATED RECONS (AR) IS DEDICATED TO TRANSFORMING LIVING SPACES THROUGH FOCUSED REDEVELOPMENT EFFORTS.

### EXPERTISE IN TRANSFORMATION

WE SPECIALIZE IN THE CONSTRUCTION AND TRANSFORMATION OF LIVING SPACES, STAYING CURRENT WITH EVOLVING LIFESTYLES AND LATEST DEVELOPMENTS.

### PROFESSIONALLY MANAGED

LED BY TWO HIGHLY QUALIFIED PROFESSIONALS, OUR MULTIDISCIPLINARY TEAM INCLUDES CIVIL ENGINEERS, ARCHITECTS, FINANCE EXPERTS, AND LEGAL ADVISORS, ALL DEDICATED TO ENSURING QUALITY AND CUSTOMER SATISFACTION.

### PROVEN TIMELY DELIVERY

AR HAS A CONSISTENT TRACK RECORD OF DELIVERING PROJECTS ON TIME, ALLOWING OUR CUSTOMERS TO MOVE INTO THEIR DREAM HOMES AS PLANNED.

### SUSTAINABILITY RECOGNITION

AR'S COMMITMENT TO SUSTAINABLE AND ECO-FRIENDLY CONSTRUCTION PRACTICES WHICH IS ACKNOWLEDGE WITH 'PLATINUM' RATINGS FROM THE 'INDIAN GREEN BUILDING COUNCIL' (IGBC) FOR OUR PROJECTS.

### STRATEGIC PROJECTS IN PRIME LOCATION

EXCITING PROJECTS ARE IN THE PIPELINE, STRATEGICALLY LOCATED IN SOUGHT-AFTER AREAS, INCLUDING DHANUKAR COLONY, PAUD RD, KARVENAGAR, MAYUR COLONY, AUNDH, SAHAKARNAGAR, AND BIBVEWADI.

TRANSFORMING SPACES WITH A COMMITMENT TO QUALITY, SUSTAINABILITY, AND TIMELY DELIVERY, AR IS YOUR PARTNER IN CREATING DREAM HOMES.



## AMENITIES



ELEGANT  
ENTRANCE LOBBY



RAINWATER  
HARVESTING



MULTI-LEVEL  
PARKING



CCTV CAMERA  
COVERAGE FOR  
COMMON AREAS



MODERN LIFT



FIRE FIGHTING  
SYSTEM







CHANDRAGIRI SOCIETY

BAGUL GARDEN

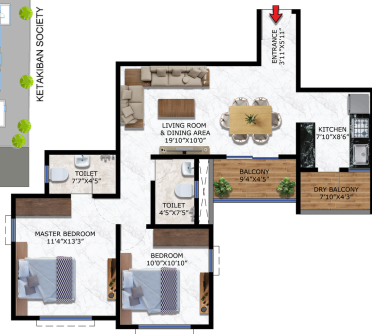
KETAKIBAN SOCIETY

9 M WIDE ROAD

KEY PLAN



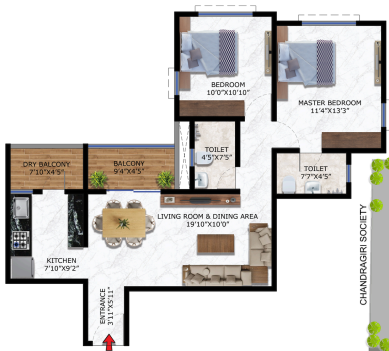
**2BHK** FLAT NO. - 403, 504  
CARPET AREA - 753 SQ.FT





**1BHK** FLAT NO. - 404, 505, 605  
CARPET AREA - 587 SQ.FT



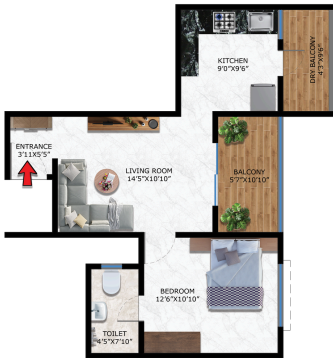


**2BHK** FLAT NO. - 501  
CARPET AREA - 759 SQ.FT



KEY PLAN





**1BHK** FLAT NO. - 502, 602  
CARPET AREA - 563 SQ.FT

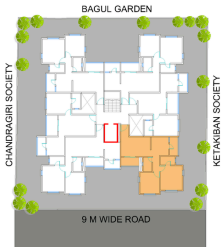


KEY PLAN





**2BHK** FLAT NO. - 503  
CARPET AREA - 728 SQ.FT

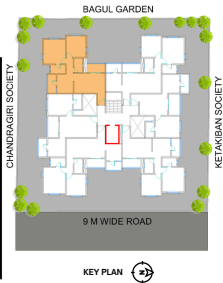


KEY PLAN





**2BHK** FLAT NO. - 506  
CARPET AREA - 729 SQ.FT





KEY PLAN

**2BHK** FLAT NO. - 601  
CARPET AREA - 778 SQ.FT





**2BHK** FLAT NO. - 603  
CARPET AREA - 741 SQ.FT



KEY PLAN





CHANDRAGIRI SOCIETY

BAGUL GARDEN

KETAKIBAN SOCIETY

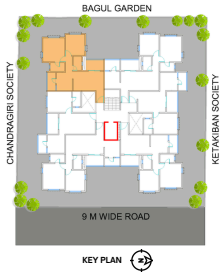
9 M WIDE ROAD

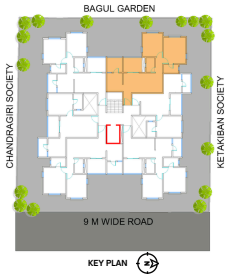
KEY PLAN



**2BHK** FLAT NO. - 604  
CARPET AREA - 765 SQ.FT

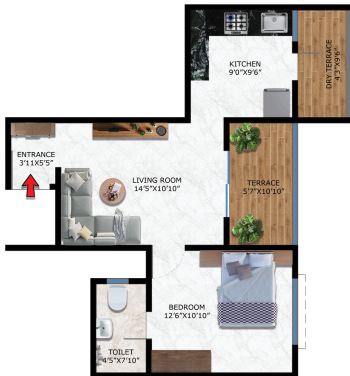






**2BHK** FLAT NO. - 701  
CARPET AREA - 822 SQ.FT





**1BHK** FLAT NO. - 702  
CARPET AREA - 563 SQ.FT

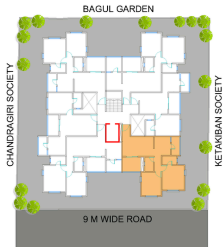


KEY PLAN





**2BHK** FLAT NO. - 703  
CARPET AREA - 767 SQ.FT

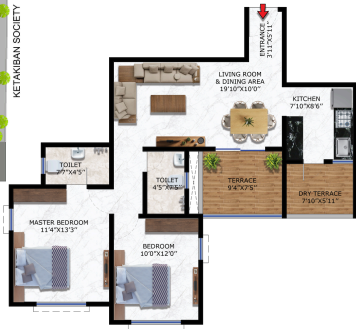


KEY PLAN



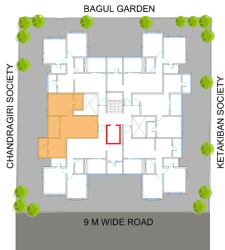


**2BHK** FLAT NO. - 704  
CARPET AREA - 808 SQ.FT





**1BHK** FLAT NO. - 705  
CARPET AREA - 587 SQ.FT

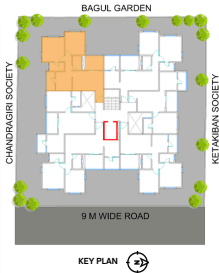


KEY PLAN



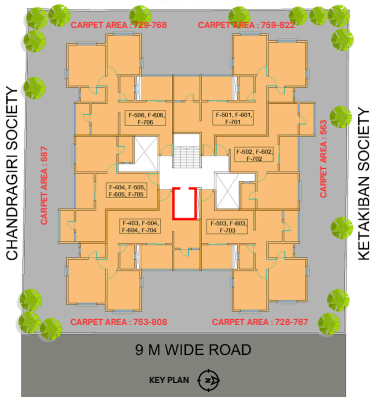


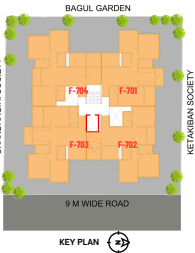
**2BHK** FLAT NO. - 706  
CARPET AREA - 768 SQ.FT





# BAGUL GARDEN







Site Address : Jai CHS, Sr.No. - 43, Sub Plot No. - 4, Parvati,  
Pune, Maharashtra - 411009.

## Let's talk it out...

Contact No. : +91 8421300229

Email : [associated.recons@gmail.com](mailto:associated.recons@gmail.com)

Website : <https://associatedrecons.com/>

Sales office address : " Devashish" Bungalow, Sr. No. - 43,  
Near Navsahyadri Post Office, Karve Nagar , Pune - 52

 **Associated Recons LLP**

